

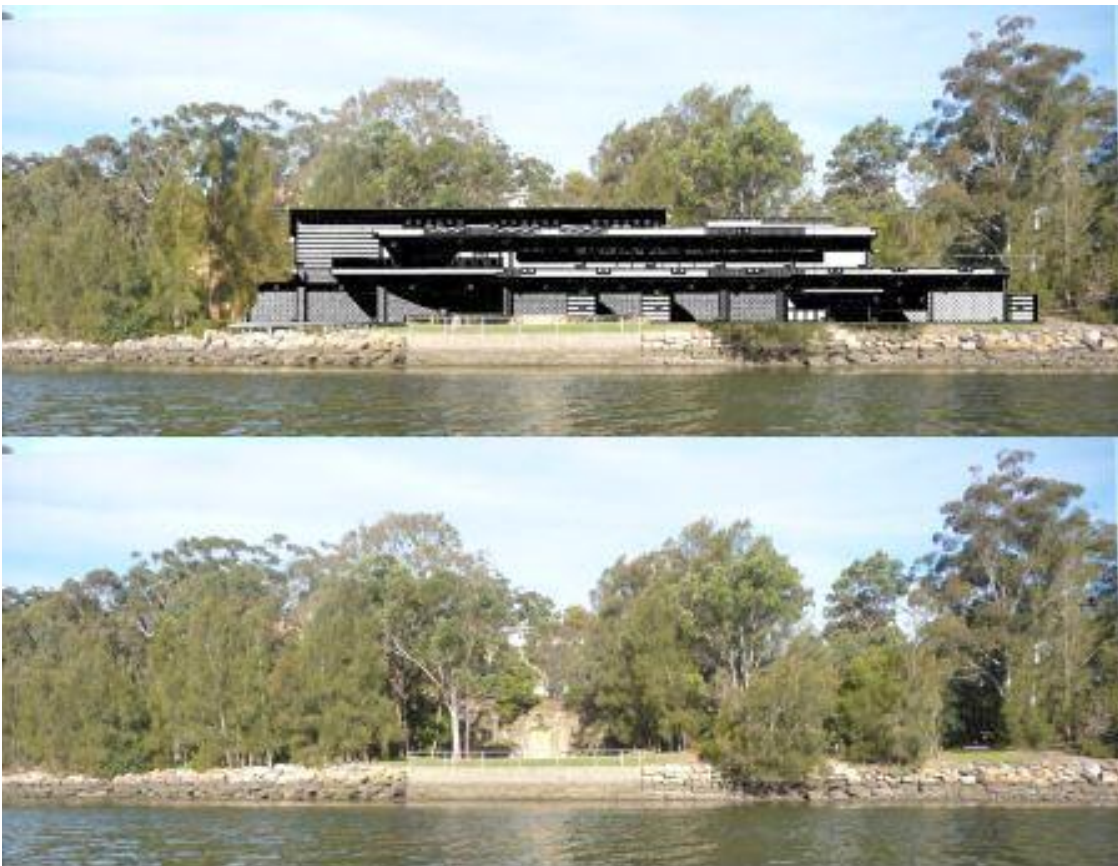


Lane Cove
Bushland & Conservation Society

SAVE OUR WATERFRONT PARKLAND

Cunninghams Reach is a beautiful park and bushland on the Lane Cove River near Figtree Bridge. It's a lovely place to have a picnic, watch the boats glide past, fish or just sit and enjoy the views of the river and the bush. It's enjoyed by people from many areas.

BUT UNLESS WE ACT NOW, 60% OF YOUR PARK WILL BE COVERED BY A 1,284sqm BOATSHED FOR THE EXCLUSIVE USE BY ELITE ROWERS OF THE SYDNEY UNIVERSITY BOAT CLUB



The park now and with the boatshed.



For more information see: www.saveourpark.org.au

Please tell Lane Cove Councillors that you oppose the privatisation of your land by this gross development.

Scott Bennison, 0402 406 241, sbennison@lanecove.nsw.gov.au

Shauna Forrest, 0410 041 279, sforrest@lanecove.nsw.gov.au

Ann Smith, 9428 4874, asmith@lanecove.nsw.gov.au

David Brookes-Horn, 0450 288 072, dbrookshorn@lanecove.nsw.gov.au

Roderick Tudge, 9418 9673, rtudge@lanecove.nsw.gov.au

Pam Palmer, 9437 6417, ppalmer@lanecove.nsw.gov.au

Win Gaffney, 0409 124 541, wgaffney@lanecove.nsw.gov.au

Keith McIlroy, 0407 287 329, kmcilroy@lanecove.nsw.gov.au

Ian Longbottom, 9428 3992, ilongbottom@lanecove.nsw.gov.au